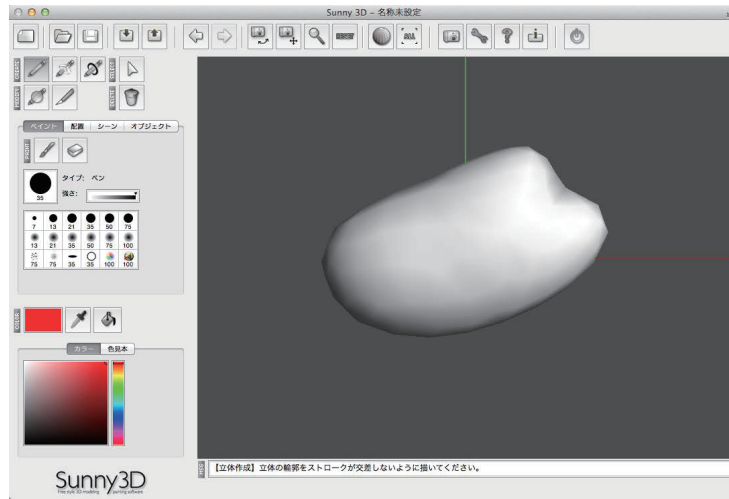
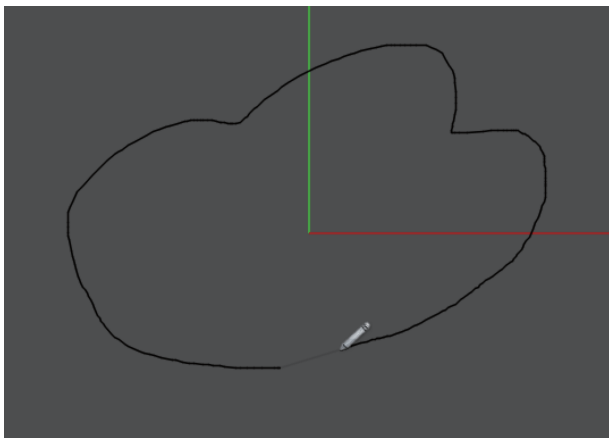


Sunny 3D の使い方

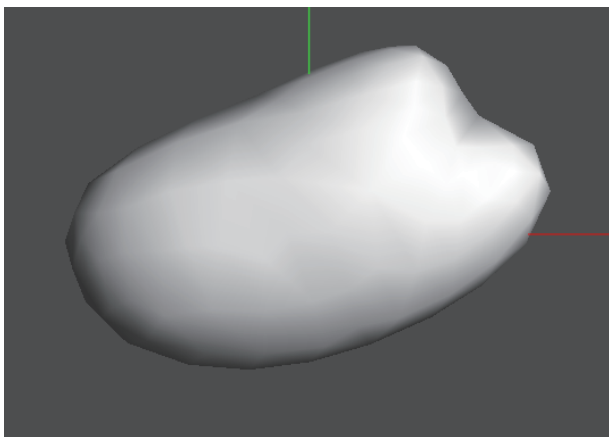


立体をつくる

りんかく線を描く



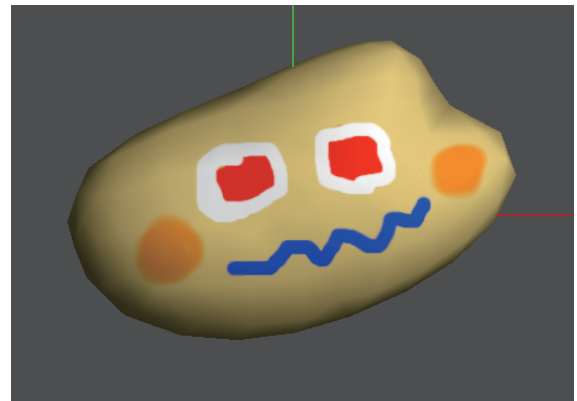
立体になる



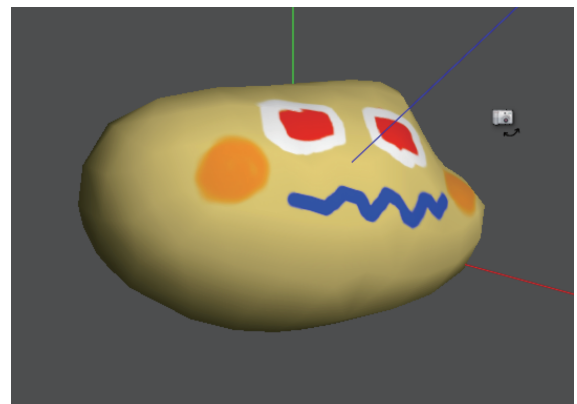
※線がクロスすると失敗

色をつける

ペンやバケツで色をぬる

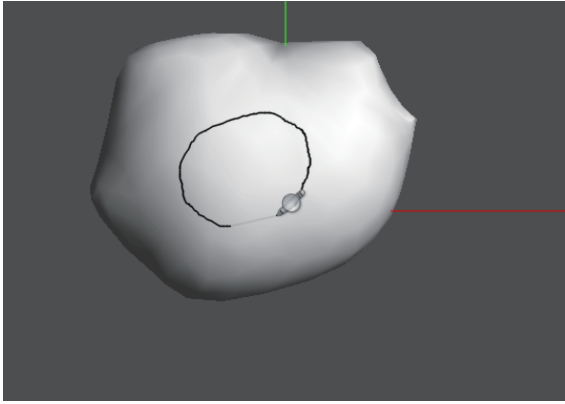


カメラで見る

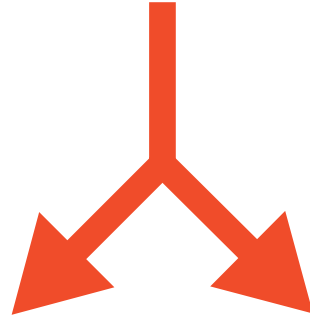
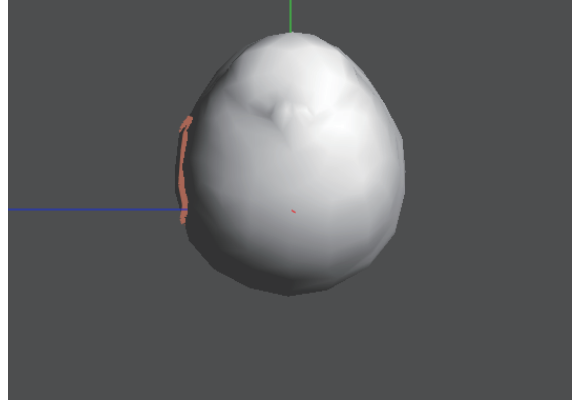


凹凸をつくる

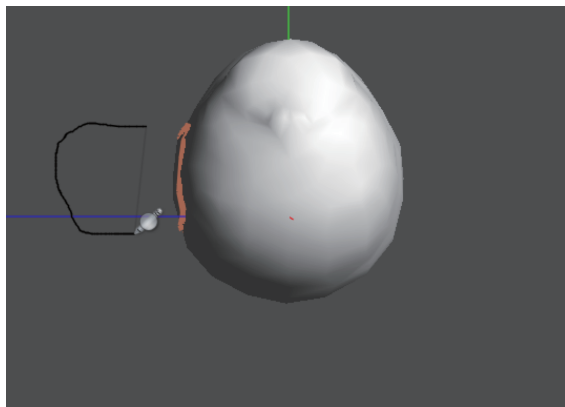
りんかく線を描く



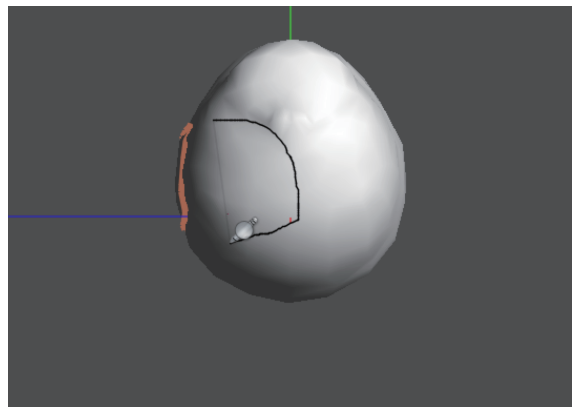
横向きにする



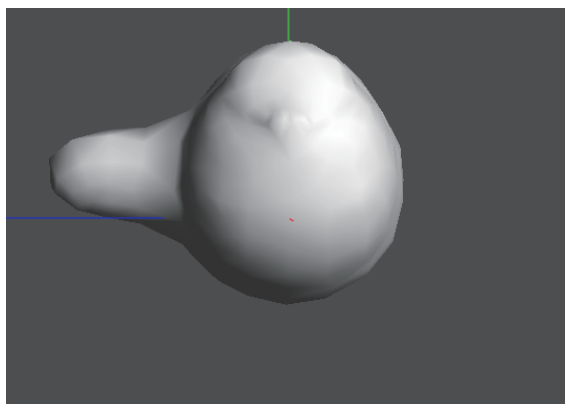
外側にりんかく線を描く



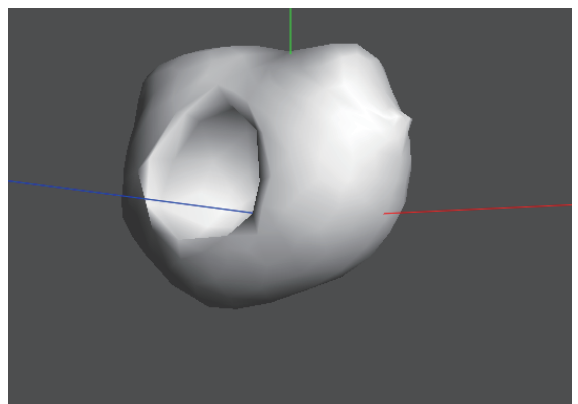
内側にりんかく線を描く



でっぱりができる

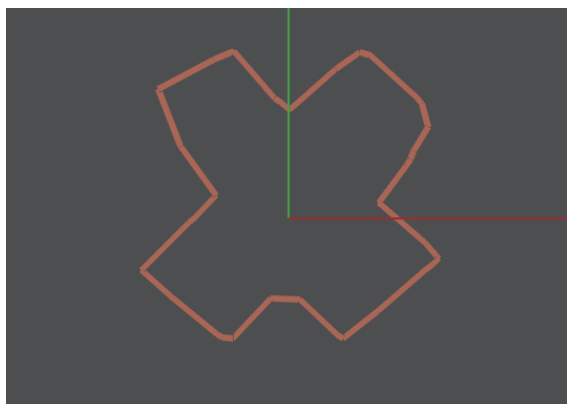


へこみができる

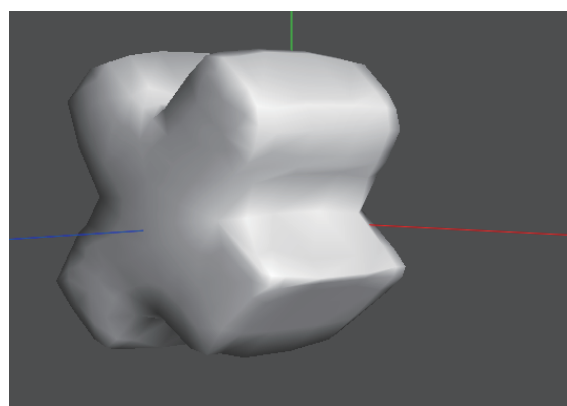
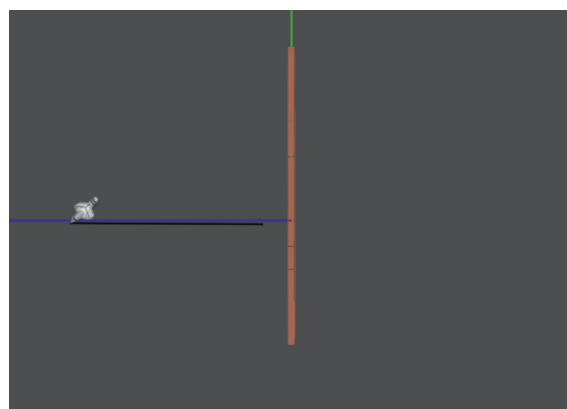


掃引体をつくる

りんかく線を描く



横向きでひいた線の方に押し出される

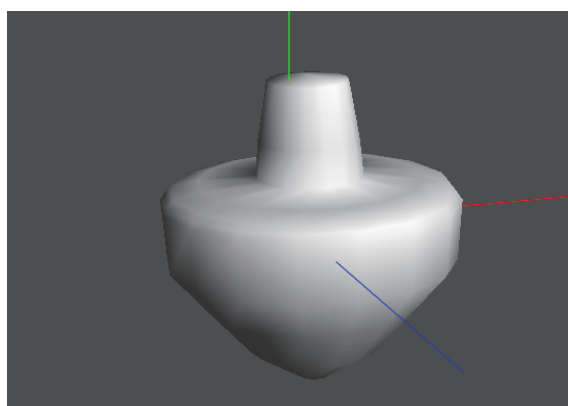
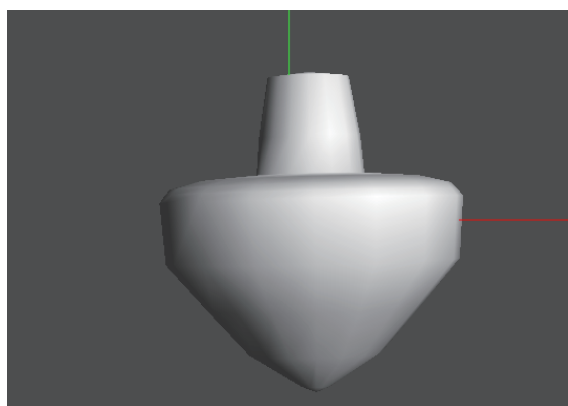


回転体をつくる

りんかく線を描く

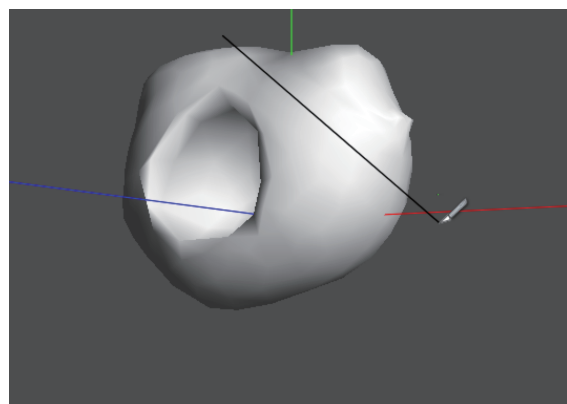


書き始めと書き終わりをむすんで
回転体ができる



カットする

カッターで線をひく



線の進行方向の左側がカットされる

